



Product 514561



514561 Holder for Cable Attachment With tilt swivel. For Motorola original cable. For both slim and extended battery.

Holder with cable plug attachment. The choice for you who often connect a cable to your radio. The cable is easy to attach to the holder, and then the cable connects to the radio automatically when you put your radio in the holder so you do not have to connect it manually each time. (Cable not included)

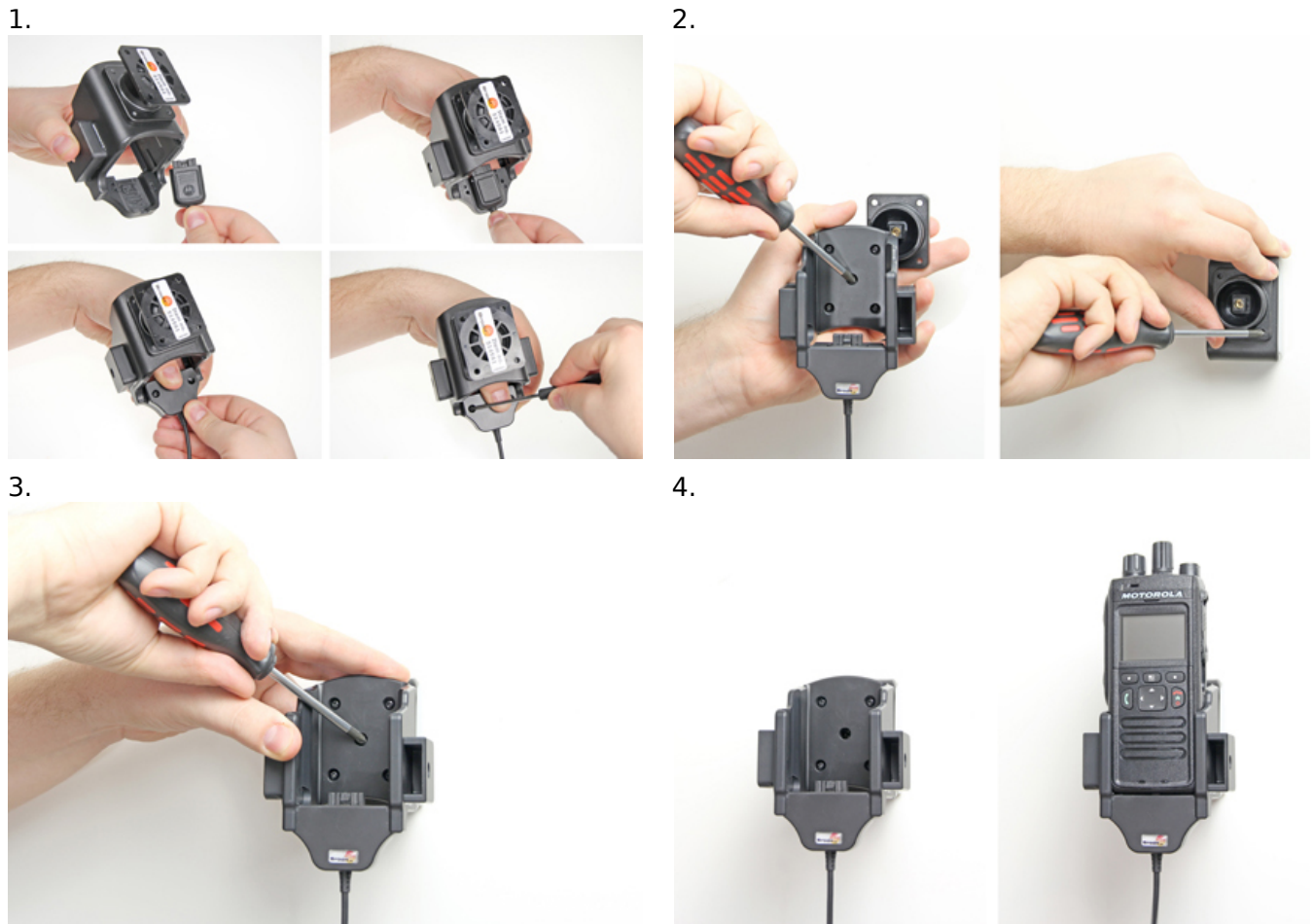
The holder is attached onto a tilt swivel, so it can be adjusted in order to avoid light reflection on the screen. Attach onto a ProClip Mounting Platform.

EAN: 7320285145610

Item no 514561 fits:

Motorola MTP 3000 (For all countries)

INSTALLATION INSTRUCTIONS



Please read all of the instructions and look at the pictures before attaching the holder.

1. Installation of cable: Place the connector into the cable housing, make sure the cable is in the correct position. Place the lid over the connector. Press the parts together and flip the holder so the backside is upwards. Screw the lid into place. The cable is in place.

2. Loosen the screw in the center of the holder so you can remove the tilt swivel attaching plate on the back. Place the attaching plate on desired position. Screw the attaching plate into place with the enclosed screws.

3. Place the holder over the attaching plate so the tilt swivel fits. Screw the holder onto the attaching plate.

4. The holder is in place.
